

## **BATES PROGRAM LICENSE AGREEMENT**

This is a legal agreement between you, the end user, and Common Sense Software, LLC. The enclosed Common Sense Software program (the "SOFTWARE") is licensed by Common Sense Software, LLC to the original purchaser of the license for use only on the terms set forth here. Please read this License Statement. Use of the program (the "SOFTWARE") indicates that you accept these terms. If you do not agree to these terms do not install the Bates Program on your system. We have attempted to provide you with an excellent product.

### **LICENSE STATEMENT - SINGLE USER VERSION**

Common Sense Software (the "SOFTWARE") is licensed for the exclusive use by one user, on one computer, per purchase.

### **LICENSE STATEMENT - NETWORK VERSION**

Common Sense Software, (the "SOFTWARE") is licensed for the exclusive use on one computer local area network (LAN) per purchase. There is a License for up to five (5) workstations at one location/office included. Additional seat/user licenses may be purchased. Wide area networks require a program license for each location/office. Please contact us for details and pricing.

### **WARRANTY DISCLAIMER**

This SOFTWARE is provided solely "as is" and without warranty of any kind. Common Sense Software disclaims all warranties, expressed or implied, including, but not limited to, implied warranties of fitness for a particular purpose with respect to defects in the diskette(s), CD's documentation, SOFTWARE, and the license granted herein.

In no event shall Common Sense Software, LLC be liable for any loss of profit or any other damage of any kind resulting from the use of this SOFTWARE or its documentation.

Demo Programs are complete for full testing before purchase. Due to the issue of an electronic key, which cannot be returned, all Common Sense Software is non-transferable, non-returnable and non-refundable. All sales are final. If you are not ordering a CD for backup please keep a copy of your install program and registration information in a safe place. This is your responsibility.

The above statements shall be construed, interpreted, and governed by the laws of the state of Nevada.

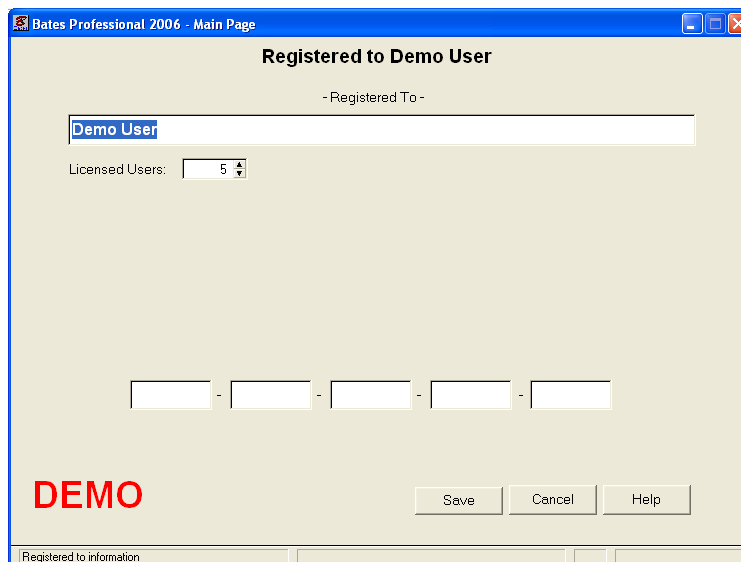
# Bates Program Installation Instructions

**Note: Before installing your Bates Program check to make sure you have the newest printer driver available for your printer. This is a must if you have a new computer and you have not replaced your printer. If you are installing on a computer with NT, Win 2000, XP or Vista make sure you have admin permissions to install software.**

**Bates Single User Version** – Download the Bates Single User Program Purchased Demo Version from <http://www.bates-stamp.com/demo.htm> or your Bates Demo Programs CD. Install the Bates Demo Program as per instructions per Install Program. When you start the demo program you will see the “**Registration**” button. Press this Button and replace “**Demo User**” with your firm name exactly as shown on your email with the key info, which is case sensitive. Next type in the key exactly as shown on your email, press Save. If you have a problem check the I & 1’s and O & 0’s in your key. You will now go the main page, your firm name should be at the top, demo in red and the Registration Button will be gone, and your program is completely functional. You can take all the guesswork out of putting the key in by using copy and paste of each section.

**Bates Network Versions** – The network versions may be installed on the server or workstations. It is installed in the same manner as above. Download the Bates Network Program Purchased Demo Version from <http://www.bates-stamp.com/demo.htm> or your Bates Demo Programs CD. The default for the number of users is 5. If you have purchased additional seat licenses add the amount purchased to the default. Change the number to the new total. To access the "Registration Screen" after the first Registration of the program type \*\*\* (shift 8 for \*) into the user initials entry box and press enter. Keep your Activation Key in a safe place for future use.

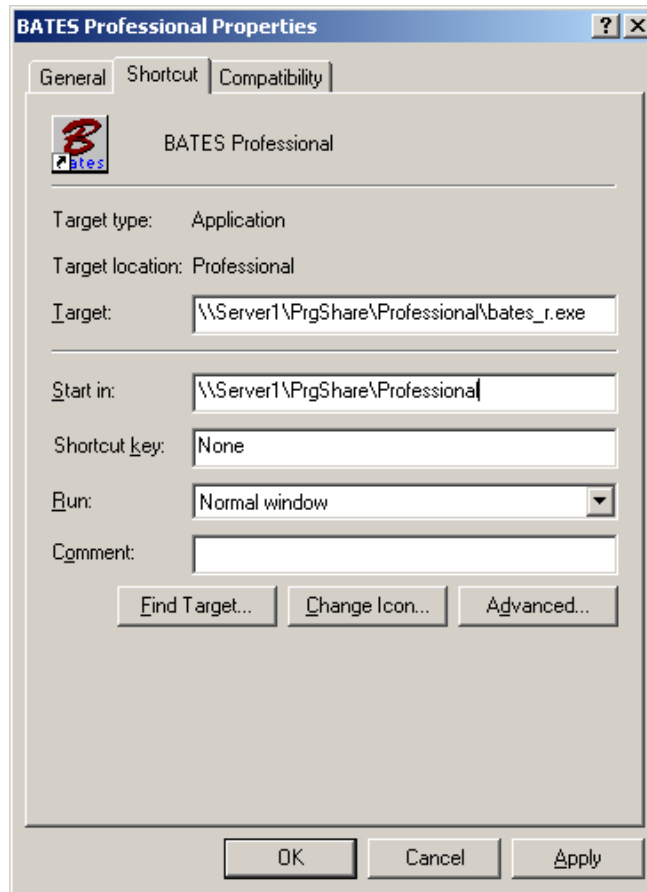
**Bates Upgrade** - If you use Bates 98 thru Bates 7 and you would like to retain your client database, then change the install folder for the new Bates program to the folder your existing Bates program is in. The new Bates program will automatically convert your existing client database and configuration when it is started for the first time. Depending on version upgraded all clients are stored in the database under user "ZZZ" - Bates House Account and under the user who created them.



## Shortcuts to the server or main computer - network version.

The important thing for the shortcuts to work is the “Start in:” field. It should be similar to the one below using the \*.EXE for the program purchase. You will notice that the “Target” and “Start in” fields are the same with the exception that the “Start in” field **DOES NOT** have the “bates.exe” Run the Shortcut Wizard in windows and copy the “Target” line to the “Start in” line, delete the bates.exe from the “Start in” line and you should be good to go.

The Windows Network shortcut on the workstation should be like similar to this. Make sure that the user has read/write access to this share.



In the directory where you have installed bates the user must have read/write permission/rights to modify files with the extension of DAT. These files hold along with the BATES.INI file are all that are accessed. Bates itself does not use any Registry Keys.

In order to stamp Word, Excel, and Word Perfect documents the user must have the PDF-XChange Printer installed. This printer is installed automatically. This version requires access to HKEY\_CURRENT\_USER.

When running from the network Bates uses the directory of where the EXE is started from for its data files. Make sure that the SHORTCUT has the proper Start-In directory.

The application will run across a network share based on this.

The Target Location:

[\\<ServerName>\<Share>\<Directory>\bates\\_x.exe](#)

The start in directory must also be in this format

\\<ServerName>\<Share>\<Directory>

If you have difficulties you can try installing the application on the local drive and then edit the “Start in” portion of the shortcut properties to point to the server share.

The user should have read-write access to this directory.

### **Trouble Shooting –**

- 1. You must have admin rights to install software. If you are not sure RIGHT CLICK on the Start button. You should see the following choices: “Open all Users” and “Explore all Users”. If these are not present contact your IT professional.**
- 2. Make sure you are installing the program purchased. Our CD contains all Demo Programs.**
- 3. Firm Name, Number of Users and Key must match the email you received.**
- 4. If you are still having problems: Uninstall program, delete Bates Folder from Program Files, delete PDF-Exchange from Printer folder (Professional & Platinum only), turn off machine, restart and sign in as Administrator, Install Bates program, put in Registration Key. 99% of the problems we have are windows permissions issues.**